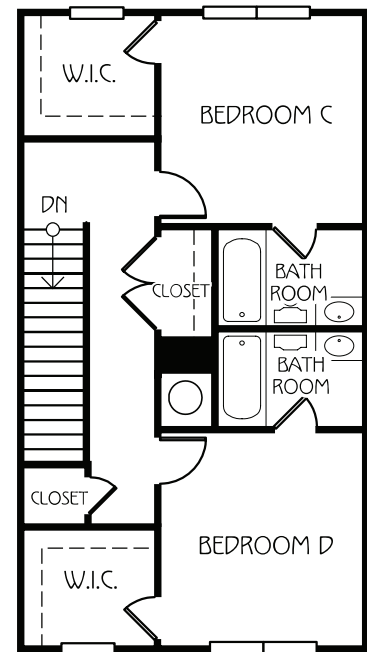
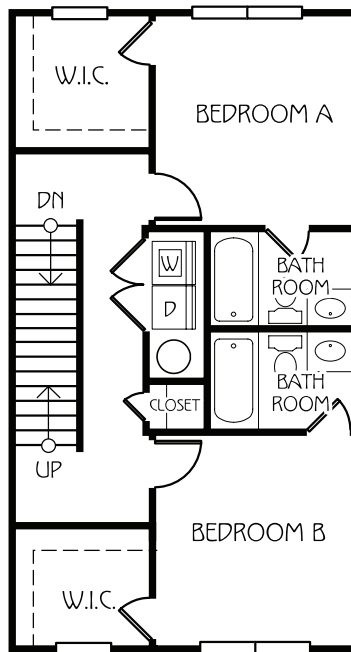
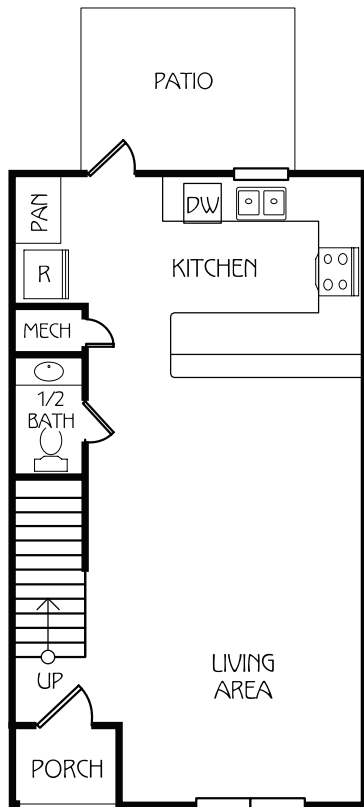




CLOVERHURST

4 BEDROOM / 4.5 BATH TOWNHOUSE



TOTAL SQ FT: 1,980

Bedroom A: 11'2" x 11'6.5"

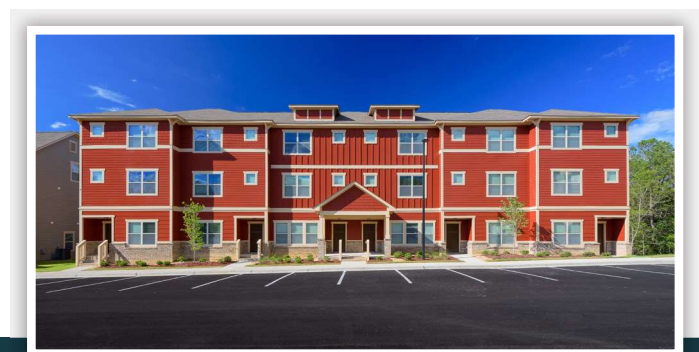
Bedroom B: 11'2" x 11'6.5"

Bedroom C: 11'6" x 11'6"

Bedroom D: 11'6" x 11'6"

Living Area: 14'6" x 9'5"

* All dimensions are approximated.



352.372.6535 RETREATGAINESVILLE.COM

1001 SW 17th Lane | Gainesville, FL 32603



*Amenities & materials subject to change. Floorplans & units subject to change. Floorplans & elevations ©2008 Garrell Associates Inc. Photography is representational. Pricing, amenities and availability subject to change without notice. Information is believed to be accurate but is not warranted. Speak with a leasing agent for additional details.

