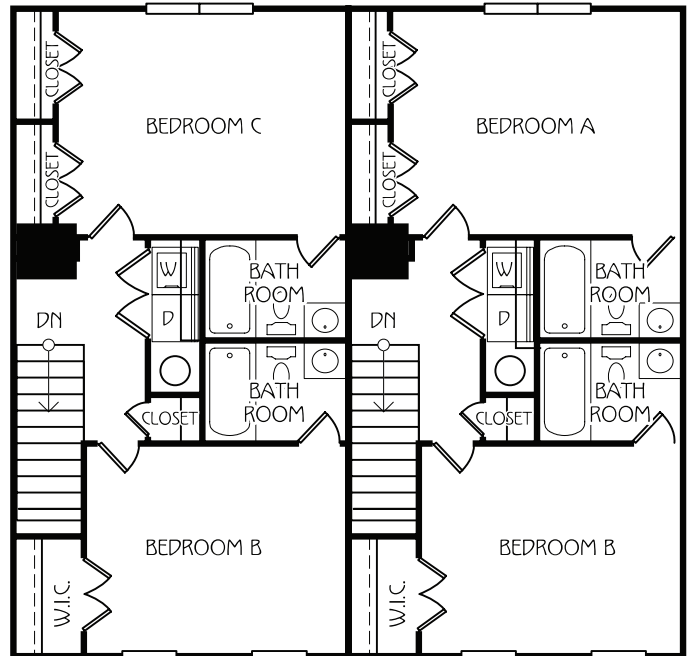
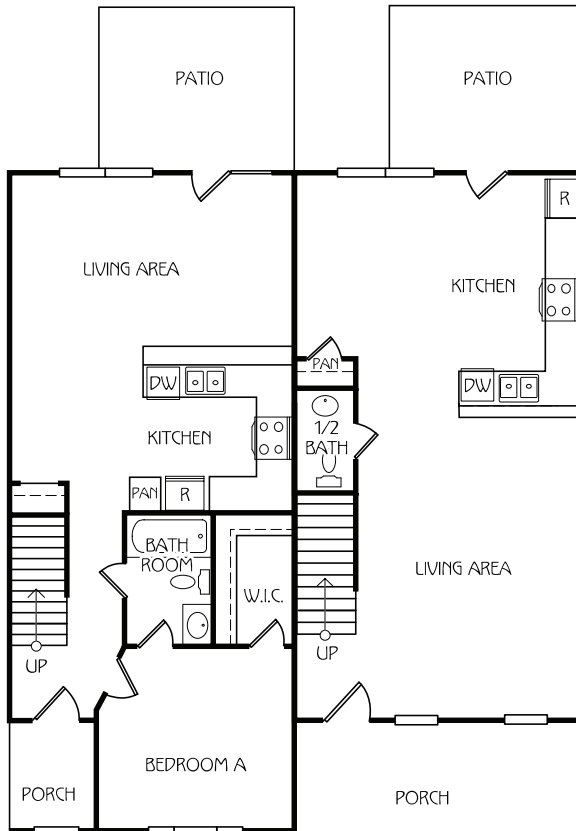




BIRCHMORE

2 BEDROOM / 2.5 BATH OR 3 BEDROOM / 3 BATH COUPLED COTTAGE



2 BEDROOM
TOTAL SQ FT: 1,398

Bedroom A: 11'6" x 15'
Bedroom B: 11'10" x 13'9"
Living Area: 19'11" x 13'9"

3 BEDROOM
TOTAL SQ FT: 1,395

Bedroom A: 11'8" x 11'11"
Bedroom B: 11'10" x 13'9"
Bedroom C: 11'6" x 15'
Living Area: 11'5" x 17'5"

* All dimensions are approximated.



352.372.6535 RETREATGAINESVILLE.COM

1001 SW 17th Lane | Gainesville, FL 32603



*Amenities & materials subject to change. Floorplans & units subject to change. Floorplans & elevations ©2008 Garrell Associates Inc. Photography is representational. Pricing, amenities and availability subject to change without notice. Information is believed to be accurate but is not warranted. Speak with a leasing agent for additional details.

