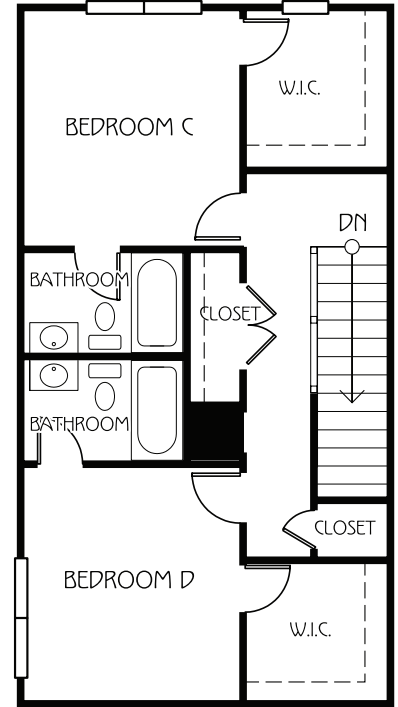
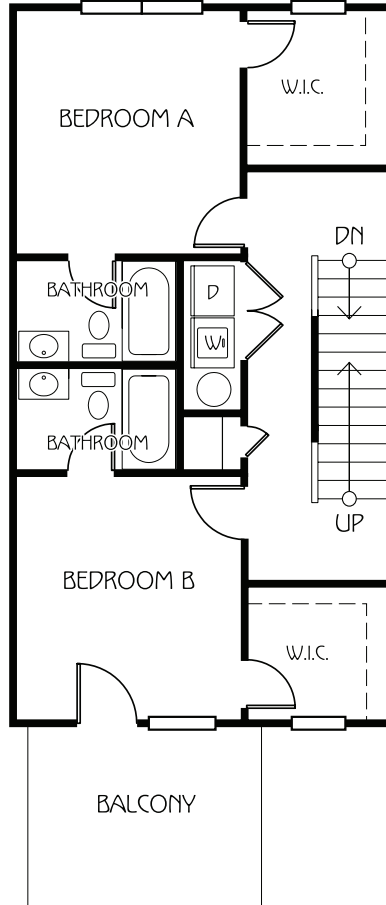
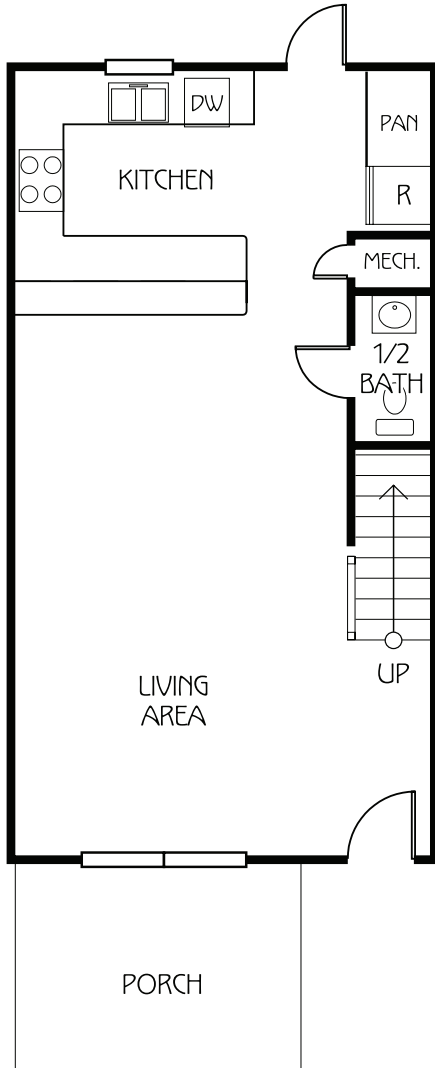




LUMPKIN

4 BEDROOM / 4.5 BATH COTTAGE



KEY

PATIO	PATIO	PATIO	PATIO
4 BR 4 BA	4 BR 4.5 BA	4 BR 4.5 BA	4 BR 4 BA
PORCH	PORCH	PORCH	PORCH

APPROX SQ FT: 2,333

Bedroom A: 12' x 11'2"

Bedroom B: 12' x 11'2"

Bedroom C: 12' x 11'2"

Bedroom D: 12' x 11'2"

Living Area: 26'3" x 14'9"



855.563.1414 RETREATGAINESVILLE.COM

The Retreat Leasing Center | 1404 W University Ave | Gainesville, FL 32603



*Amenities & materials subject to change. Floorplans & units subject to change. Floorplans & elevations ©2008 Garrell Associates Inc. Photography is representational. Pricing, amenities and availability subject to change without notice. Information is believed to be accurate but is not warranted. Speak with a leasing agent for additional details.

